

Single Core, Aluminium, XLPE insulated, Cu wire screen, PVC, AWA, MDPE. (Type A). Armoured
Longitudinally water blocked cable.

SIZE CODE: XLACWSWB 1x(conductor size)MDPE 6.6kV

Application

For use in power circuits of 3.8/6.6kV systems. Installed in cable trays and ducts.

Construction

Single core, Circular Aluminium stranded conductor (water blocked), XLPE Insulated, copper wire screened, flame retardant PVC bedded, Aluminium wire armoured, medium density Polyethylene sheathed.

Specification: SANS 1339

Voltage Rating: 3.8/6.6kV

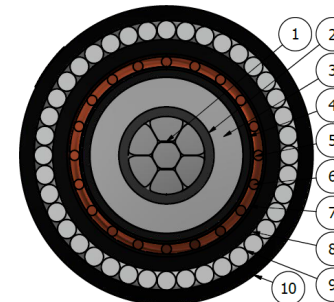
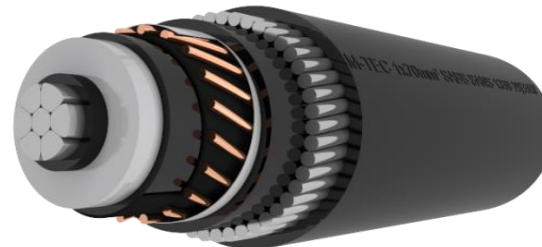
Physical properties and dimensions

Electrical Properties

Conductor size	Conductor diameter	Insulation diameter	Insulation thickness	Bedding diameter	Armour			Cable diameter	Cable mass	Gross mass (300m)	Bending radius	Current rating			Resistance Ω /km max		Reactance Ω /km	Impedance Ω /km	Capacitance μ F/km	Short circuit ratings	
					diameter	wire diameter	total area					Amps			dc @ 20°C	ac @ 90°C				Symmetrical	Earth fault
												air	ground	ducts							
mm ² Nom.	mm Nom.	mm Nom.	mm Nom.	mm Nom.	mm Nom.	mm Nom.	mm ² Min.	mm Nom.	kg/m Nom.	kg Nom.	mm min.	air	ground	ducts	@ 20°C	@ 90°C	Ω /km	Ω /km	μ F/km	4.0	5.7
50	8.2	17.0	2.5	23.8	27.6	1.60	84.4	32.5	1.17	700	650	190	160	125	0.641	0.822	0.153	0.836	0.329	4.0	5.7
70	9.9	18.5	2.5	25.5	29.3	1.60	90.5	34.4	1.26	828	689	235	195	155	0.443	0.568	0.144	0.586	0.372	5.8	6.1
95	11.8	20.5	2.5	27.4	31.2	1.60	96.5	36.3	1.34	853	726	285	230	180	0.320	0.411	0.134	0.432	0.431	8.0	6.5
120	13.1	21.5	2.5	28.7	32.5	1.60	102.5	37.6	1.42	977	752	325	260	205	0.253	0.325	0.129	0.350	0.466	10.2	6.9
150	14.8	23.5	2.5	30.4	34.2	1.60	106.6	39.5	1.50	1,001	790	370	290	230	0.206	0.265	0.125	0.293	0.513	12.5	11.9
185	16.3	25.0	2.5	31.9	36.5	2.00	144.5	41.8	1.83	1,100	837	420	325	260	0.164	0.211	0.121	0.243	0.545	15.7	10.3
240	18.9	27.5	2.6	34.7	39.3	2.00	157.1	44.8	2.00	1,049	896	485	370	290	0.125	0.162	0.125	0.205	0.513	20.6	11.2
300	21.2	30.5	2.8	37.4	42.0	2.00	169.6	47.7	2.17	1,202	954	550	415	330	0.100	0.133	0.114	0.175	0.622	25.7	12.1
400	23.9	33.5	3.0	40.5	45.1	2.00	185.4	51.8	2.45	1,184	1037	630	460	360	0.078	0.108	0.111	0.155	0.648	33.1	13.3
500	27.2	37.0	3.2	45.0	45.0	2.50	255.3	56.9	3.12	1,487	1138	715	515	410	0.061	0.088	0.108	0.139	0.678	42.5	11.7
630	31.2	41.0	3.2	48.6	54.2	2.50	279.8	60.8	3.39	1,467	1215	810	570	450	0.047	0.071	0.104	0.126	0.763	55.0	12.8

Cable Identification:

FRPVC (red stripe), LHFRPVC (blue stripe),
HFFR (white stripe), PE (no stripe).



Item	Description
1	Aluminium conductor
2	Semi-conductive conductor screen
3	TR XLPE Insulation
4	Semi-conductive core screen
5	Semi-conductive bedding tape
6	Copper wire screen
7	Binding tape
8	Bedding
9	Aluminium wire armour
10	Sheathing

Revision: R00 12/07/2017

www.m-tec.co.ca / Marketing@m-tec.co.ca / +2716 450 8200

