

Single Core, Aluminium, XLPE insulated, Cu wire screen, PVC, AWA, MDPE. (Type A). Armoured
Longitudinally water blocked cable.

SIZE CODE: XLACWSWB 1x(conductor size)MDPE 33kV

Application

For use in power circuits of 19/33kV systems. Installed in cable trays and ducts.

Construction

Single core, Circular Aluminium stranded conductor (water blocked), XLPE Insulated, copper wire screened, flame retardant PVC bedded, Aluminium wire armoured, medium density Polyethylene sheathed.

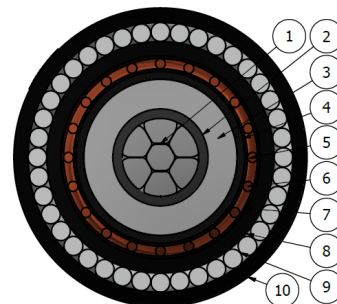
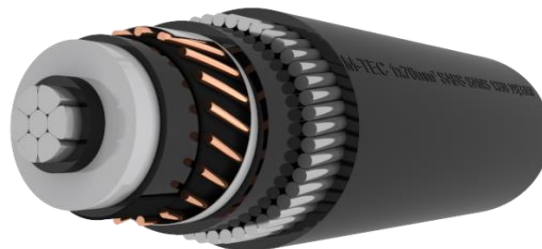
Specification: SANS 1339

Voltage Rating: 19/33kV

Physical properties and dimensions												Electrical Properties									
Conductor size	Conductor diameter	Insulation diameter	Insulation thickness	Bedding diameter	Armour			Cable diameter	Cable mass	Gross mass (300m)	Bending radius	Current rating			Resistance Ω /km max		Reactance Ω /km	Impedance Ω /km	Capacitance μ F/km	Short circuit ratings	
					diameter	wire diameter	total area					Amps			dc @ 20°C	ac @ 90°C				Symmetrical	Earth fault
mm ² Nom.	mm Nom.	mm Nom.	mm Nom.	mm Nom.	mm Nom.	mm Nom.	mm ² Min.	mm Nom.	kg/m Nom.	kg Nom.	mm min.	air	ground	ducts						ka (1sec)	
50	8.2	27.8	8.0	35.1	39.7	2.00	182.2	45.4	2.81	1,192	908	190	160	125	0.641	0.822	0.167	0.839	0.141	4.0	12.2
70	9.9	29.5	8.0	36.8	41.4	2.00	188.5	47.1	3.06	1,368	942	235	195	155	0.443	0.568	0.158	0.590	0.157	5.8	12.6
95	11.8	31.4	8.0	38.7	43.3	2.00	197.9	49.2	3.32	1,445	983	285	230	180	0.320	0.411	0.148	0.436	0.173	8.0	13.3
120	13.1	32.7	8.0	40.0	44.6	2.00	204.2	50.5	3.50	1,601	1009	325	260	205	0.253	0.325	0.143	0.355	0.185	10.2	13.7
150	14.8	34.4	8.0	41.9	47.5	2.50	270.0	53.6	4.21	1,813	1072	370	290	230	0.206	0.265	0.142	0.300	0.200	12.5	19.3
185	16.3	35.9	8.0	43.4	49.0	2.50	279.8	55.3	4.49	1,898	1107	420	325	260	0.164	0.211	0.137	0.251	0.214	15.7	20.0
240	18.9	38.5	8.0	46.0	51.6	2.50	294.5	57.9	4.90	1,921	1158	485	370	290	0.125	0.162	0.142	0.215	0.200	20.6	21.1
300	21.2	40.8	8.0	48.5	54.1	2.50	309.3	60.6	5.34	2,153	1212	550	415	330	0.100	0.131	0.128	0.183	0.358	25.7	22.1
400	23.9	43.5	8.0	51.8	57.4	2.50	328.9	64.1	5.96	2,238	1283	630	460	360	0.078	0.106	0.123	0.162	0.503	33.1	23.5
500	27.2	46.8	8.0	55.9	55.9	2.50	353.4	68.4	6.74	2,573	1368	715	515	410	0.061	0.085	0.119	0.146	0.554	42.5	25.3
630	31.2	50.8	8.0	59.3	64.9	2.50	373.1	72.1	7.47	2,690	1441	810	570	450	0.047	0.068	0.114	0.132	0.616	55.0	26.7

Cable Identification:

FRPVC (red stripe), LHFRPVC (blue stripe), HFFR (white stripe), PE (no stripe).



Item	Description
1	Aluminium conductor
2	Semi-conductive conductor screen
3	TR XLPE Insulation
4	Semi-conductive core screen
5	Semi-conductive bedding tape
6	Copper wire screen
7	Binding tape
8	Bedding
9	Aluminium wire armour
10	Sheathing

Revision: R00 12/07/2017

www.m-tec.co.ca / Marketing@m-tec.co.ca / +2716 450 8200

