

7 Core
Circular Copper, PVC, LHFRPVC.

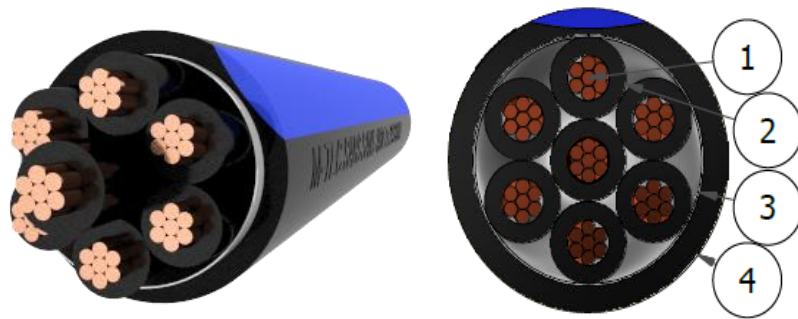
Application:
For use in power circuits of 600/1 000V earthed systems. Installed in cable trays & ducts.

Voltage Rating: 600 / 1 000V
Specification: SANS 1507-3

Construction:
7 Core, Copper stranded circular conductor, PVC insulated, low halogen flame retardant PVC sheath.

SIZE CODE LVCPUA 7x(conductor size)LH 1kV

Conductor size	Conductor diameter	Insulation diameter	Cable diameter	Cable mass	Cable gross mass	Bending radius	Current rating (estimate of maximum)			Reactance	Resistance		Impedance	Capacitance	Short circuit ratings		Single phase volt drop
							A				Ω/km max				Symmetrical	kA (1sec)	
mm ² Nom.	mm Nom.	mm Nom.	mm Nom.	kg/m Nom.	500m Nom.	mm min.	air	ground	ducts	Ω/km	dc @ 20°C	ac @ 70°C	Ω /km	μF/km			kA (1sec)
2.5	2.00	3.65	14.6	0.34	271	146	15.4	20.2	14.7	0.103	7.410	8.866	8.867	0.369	0.315	17.73	



Item	Description
1	Annealed Copper conductor
2	Insulation
3	Binding / separator tape (if applicable)
4	Sheath