

4 Core

90° Shaped solid Aluminium, PVC, PVC, SWA+ECC, FRPVC / LHFRPVC.

Application:

For use in power circuits of 600/1 000V earthed systems. Installed in cable trays, ducts and underground.

Construction:

4 Core, solid Aluminium sector shaped conductor, PVC insulated, PVC bedding, steel wire armoured + earth continuity conductor and flame retardant PVC or low halogen flame retardant PVC sheath.

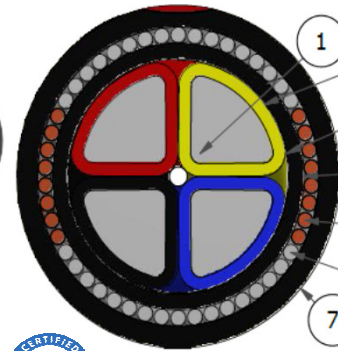
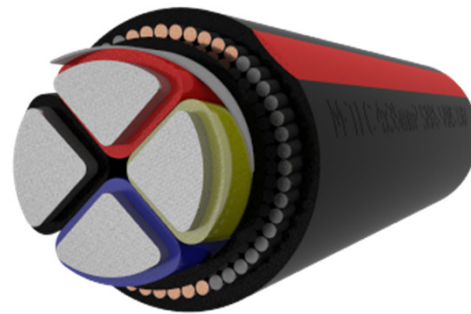
Voltage Rating: 600/1 000V

Specification: SANS 1507-3

SIZE CODE

AP 4x(conductor size)FRE / LHE 1kV

Conductor size	Conductor depth	Insulation depth	Bedding diameter	Armour diameter	Cable diameter	Cable mass	Cable Gross mass	Bending radius	Maximum pulling force	Current rating			Reactance	Resistance		Impedance	Capacitance	Short circuit ratings		3 Phase volt drop
										Amps	Amps	Amps		Ω/km max	Ω/km max			Symmetrical	Earth fault	
mm ² Nom.	mm Nom.	mm Nom.	mm Nom.	mm Nom.	mm Nom.	kg/m Nom.	300m Nom.	mm min.	kN	air	ground	ducts	Ω /km	dc @ 20°C	ac @ 70°C	Ω /km	μF/km	kA (1sec)		mV/A/m
25	5.2	7.7	20.5	23.0	26.5	1.3	543	265	2.35	80	90	73	0.088	1.20	1.44	1.444	0.569	1.9	3.8	2.50
35	6.2	8.7	22.7	25.9	29.6	1.7	661	296	3.30	99	108	87	0.085	0.87	1.04	1.046	0.655	2.7	5.1	1.81
50	7.2	10.1	26.0	29.2	32.9	2.0	768	329	4.71	119	129	104	0.085	0.64	0.77	0.775	0.655	3.8	6.7	1.34
70	8.7	11.6	29.8	33.8	37.9	2.8	1,040	379	6.59	151	158	130	0.082	0.44	0.53	0.538	0.770	5.3	9.4	0.93
95	10.3	13.6	34.3	38.3	42.9	3.5	1,246	429	8.94	186	192	157	0.078	0.32	0.38	0.392	0.791	7.2	12.1	0.68
120	11.6	14.9	37.3	41.3	46.3	4.0	1,398	463	11.30	216	219	179	0.077	0.25	0.30	0.314	0.880	9.1	12.7	0.54
150	12.8	16.5	41.5	46.5	51.5	5.1	1,805	515	14.12	250	245	201	0.078	0.21	0.25	0.259	0.868	11.4	17.9	0.45
185	14.4	18.5	46.0	51.0	56.4	6.1	2,083	564	17.42	287	278	229	0.077	0.16	0.20	0.211	0.874	14.1	21.2	0.37
240	16.5	21.1	51.8	56.8	62.6	7.3	2,459	626	22.60	344	324	268	0.076	0.13	0.15	0.168	0.909	18.2	22.9	0.29
300	18.5	23.5	57.3	62.3	68.5	8.6	2,857	685	28.24	396	366	304	0.076	0.10	0.12	0.142	0.931	22.8	26.9	0.25



Item	Description
1	Solid Aluminium conductor
2	Insulation
3	Separator / binding tape
4	Bedding
5	Galvanized steel wire armouring
6	Tinned Copper earth continuity conductor
7	Sheathing

Revision: R02 11/11/2015



The information contained within this document must not be copied, reproduced or in any form, either wholly or in part, without the written consent of M-TEC. The information is believed to be correct at the time of issue to the best of M-TEC's knowledge. M-TEC reserves the right to amend this specification without prior notification. This specification is not contractually valid unless specifically authorised by M-TEC. M-TEC shall not be liable for any damages whatsoever (including indirect, accidental, special, punitive or consequential damages and loss of profits, opportunities or information) arising from or result from the use of or reliance on information contained in this document, and/or any inaccuracy or omission in such information contained in this document.