

Single Core
Aluminium, XLPE insulated, unarmoured, FRPVC / LHFRPVC sheathed (Type B).

SIZE CODE XLAUA 1x(Conductor size) FR / LH 11kV

Application:
For use in power circuit systems of 6.35 / 11kV. Installed in cable trays and ducts.

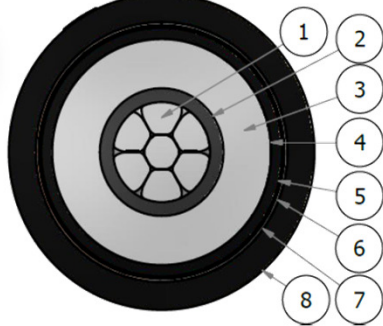
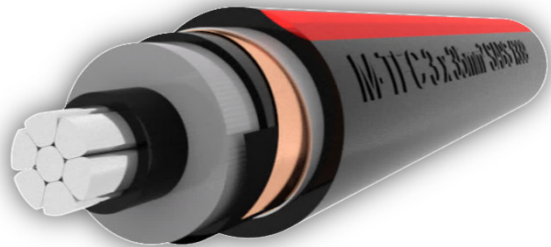
Voltage Rating: 6.35 / 11kV
Specification: SANS 1339

Construction
1 Core, circular stranded Aluminium conductor, XLPE insulated, copper tape screened, flame retardant / low halogen flame retardant PVC sheathed

Physical properties and dimensions | **Electrical properties**

Conductor size	Conductor diameter	Insulation diameter	Cable diameter	Cable mass	Gross mass 1000m	Bending radius	Current rating trefoil			Resistance Ω /km max	Reactance	Impedance	Capacitance	Short circuit						
							A							dc @ 20°C	ac @ 90°C	Ω /km	Ω /km	μ F/km	Symmetrical	Max, earth fault rating
							air	ground	ducts										kA (1sec)	kA (1sec)
50	8.20	18.50	24	0.75	1,023	480	170	155	125	0.641	0.822	0.132	0.832	0.261	4.0	1.0				
70	9.90	20.00	26	0.87	1,141	510	225	190	150	0.443	0.568	0.124	0.581	0.296	5.8	1.0				
95	11.80	22.00	28	1.02	1,291	550	270	230	185	0.320	0.410	0.118	0.427	0.334	8.0	1.0				
120	13.10	23.50	29	1.14	1,405	580	315	260	205	0.253	0.324	0.112	0.343	0.360	10.2	1.0				
150	14.80	25.00	31	1.29	1,555	620	360	295	230	0.206	0.264	0.108	0.285	0.395	12.5	1.0				
185	16.30	26.50	33	1.44	1,744	650	410	330	260	0.164	0.210	0.105	0.235	0.426	15.7	1.0				
240	18.90	29.00	35	1.71	2,009	700	485	385	305	0.125	0.160	0.101	0.189	0.478	20.6	1.0				
300	21.20	31.50	37	1.85	2,148	740	555	435	345	0.100	0.128	0.098	0.161	0.524	25.7	1.0				
400	23.90	34.00	40	2.19	2,461	800	650	495	395	0.078	0.100	0.094	0.137	0.578	33.1	1.0				
500	27.20	37.50	44	2.62	2,925	870	760	560	445	0.061	0.078	0.091	0.120	0.645	42.5	1.0				
630	31.20	41.50	48	3.18	3,477	960	870	630	505	0.047	0.060	0.088	0.107	0.726	55.0	1.0				

Cable Identification:
FRPVC (red stripe), LHFRPVC (blue stripe), HFFR (white stripe), PE (no stripe).



Item:	Description
1	Aluminium conductor
2	Semi-conductive conductor screen
3	TR XLPE insulation
4	Semi-conductive core screen
5	Semi-conductive tape
6	Copper tape screen
7	Separator tape
8	Sheathing

Note: Under ground installation is only permitted if the cable is adequately protected against mechanical damage.
Revision: R00 19/07/2017



The information contained within this document must not be copied, reprinted or reproduced in any form, either wholly or in part, without the written consent of M-TEC. The information is believed to be correct at the time of issue to the best of M-TEC's knowledge. M-TEC reserves the right to amend this specification without prior notification. This specification is not contractually valid unless specifically authorised by M-TEC. M-TEC shall not be liable for any damages whatsoever (including indirect, accidental, special, punitive or consequential damages and loss of profits, opportunities or information) arising from or result from the use of or reliance on information contained in this document, and/or any inaccuracy or omission in such information contained in this document.